

MISSION GROUP ENTERPRISES

346 LAWRENCE AVENUE - DEVELOPMENT

KELOWNA, BC

LANDSCAPE WORKS - DEVELOPMENT PERMIT PRIOR TO CONDITIONS RESPONSE

AUGUST 26, 2024

LIST OF DRAWINGS

- LDP1 : COVER SHEET
- LDP2.1: LANDSCAPE PLAN - GROUND FLOOR
- LDP2.2: LANDSCAPE PLAN - 6TH FLOOR
- LDP2.3: LANDSCAPE PLAN - 13TH FLOOR
- LDP3.1: WATER CONSERVATION REPORT - GROUND FLOOR
- LDP3.2: WATER CONSERVATION REPORT - 6TH FLOOR & 13TH FLOOR
- LDP4.1: LANDSCAPE DETAILS

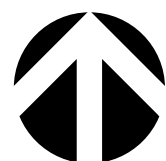


LEGEND:

- PROPOSED TREES
- PROPERTY LINE
- CONCRETE PAVING (REFER ARCHITECT)
- GRANITE UNIT PAVERS
- SHRUB PLANTING
- PERENNIAL PLANTING
- BIKE RACK
- BENCH
- GARBAGE BIN
- TREE GRATE

TOTAL PLANT LIST				
QTY	BOTANICAL NAME	COMMON NAME	SIZE	ROOT
Trees Deciduous				
5	<i>Tilia americana</i> 'Duros'	True North Linden	6cm Cal	B&B
Shrubs				
4	<i>Buddleia</i> x 'Miss Molly'	'Miss Molly' Butterfly Bush	#02	Potted
15	<i>Buxus</i> 'Green Gem'	Green Gem Boxwood	#02	Potted
4	<i>Buxus</i> 'Green Velvet'	Green Velvet Boxwood	#02	Potted
4	<i>Hydrangea arborescens</i> 'Annabelle'	Smooth Hydrangea	#02	Potted
4	<i>Hydrangea serrata</i> 'Bluebird'	Mountain Hydrangea 'Bluebird'	#02	Potted
3	<i>Rhus aromatica</i> 'Gro Low'	Fragrant Sumac	#02	Potted
8	<i>Syringa</i> x <i>Bloomerang</i> 'Dwarf Pink'	Dwarf Pink Lilac	#02	Potted
Ornamental Grasses				
5	<i>Deschampia cespitosa</i> 'Bronzeschleier'	Bronze Veil Tufted Hairgrass	#01	Potted
3	<i>Miscanthus sinensis</i> 'Morning Light'	Maiden Grass 'Maiden Light'	#01	Potted
6	<i>Pennisetum alopecuroides</i> 'Karley Rose'	Karley Rose Fountain Grass	#01	Potted
Ornamental Grasses				
6	<i>Nepeta x faassenii</i> 'Walker's Low'	Walker's Low Catmint	#01	Potted
9	<i>Rudbeckia fulgida</i> 'Goldsturm'	Black-eyed Susan	#01	Potted

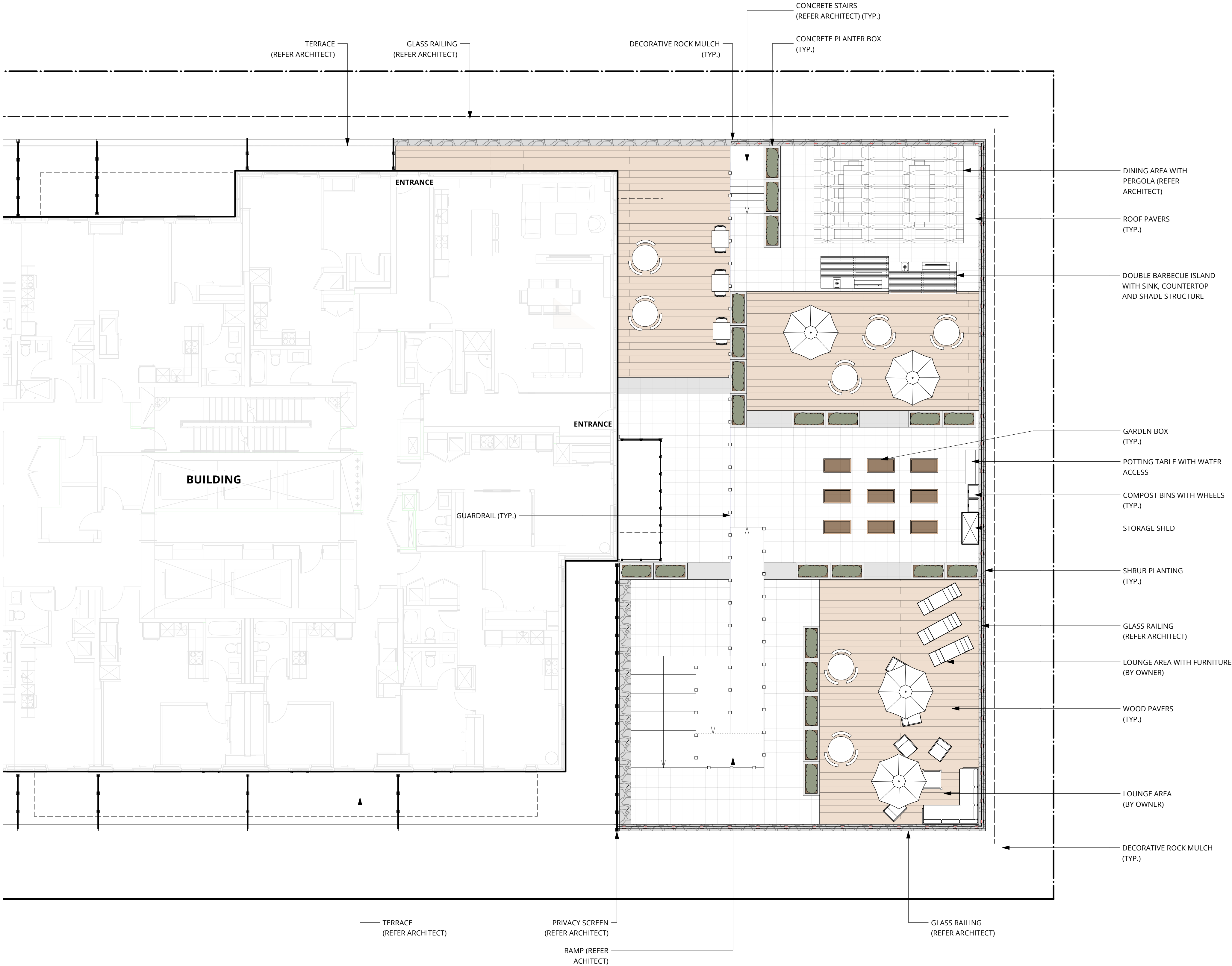
- NOTES:**
- THIS DRAWING DEPICTS FORM AND CHARACTER AND IS TO BE USED FOR DEVELOPMENT PERMIT SUBMISSION ONLY. IT IS NOT INTENDED FOR USE AS A CONSTRUCTION DOCUMENT.
 - THE LANDSCAPE DESIGN INDICATED HEREIN IS CONCEPTUAL; HOWEVER, IT REFLECTS THE MINIMUM ACCEPTABLE QUALITY AND SIZE.
 - ALL PLANT MATERIALS AND CONSTRUCTION METHODS SHALL CONFORM TO THE MINIMUM STANDARDS SET OUT IN THE CANADIAN LANDSCAPE STANDARD (CURRENT EDITION).
 - PLANT MATERIAL SELECTIONS INDICATED HEREIN ARE CONCEPTUAL ONLY. FINAL PLANTING SELECTIONS MAY VARY DEPENDING UPON AVAILABILITY.
 - ALL PLANTING BEDS SHALL RECEIVE 50mm OF COMPOSTED BARK MUCH.
 - ALL LANDSCAPE AREAS ARE TO BE IRRIGATED WITH AN EFFICIENT AUTOMATIC IRRIGATION SYSTEM.
 - SOIL DEPTH TO BE AS FOLLOWS: SHRUB AREAS=300mm MIN, TREES=1000mm OR PLANTER DEPTH.



ISSUED FOR :		
2	ISSUED FOR DEVELOPMENT PERMIT PRIOR TO CONDITIONS RESPONSE #2 FINAL	2024-08-26
1	ISSUE FOR DP PRIOR TO CONDITIONS RESPONSE	2023-10-13
0	ISSUED FOR DEVELOPMENT PERMIT	2023-03-30
NO.	DESCRIPTION	DATE



ISSUED FOR :		
2	ISSUED FOR DEVELOPMENT PERMIT PRIOR TO CONDITIONS RESPONSE #2 FINAL	2024-08-26
1	ISSUE FOR DP PRIOR TO CONDITIONS RESPONSE	2023-10-13
0	ISSUED FOR DEVELOPMENT PERMIT	2023-03-30
NO.	DESCRIPTION	DATE



BBQ DINING AREA



RAISED PLANTERS



TABLES AND CHAIRS WITH UMBRELLAS



PLANTING

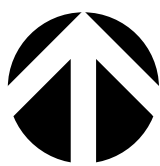
LEGEND:

	PROPERTY LINE
	ROOF PAVERS
	WOOD PAVERS
	DECORATIVE ROCK MULCH
	SHRUB PLANTING
	PERENNIAL PLANTING
	GARDEN BOX
	CONCRETE PLANTER BOX

TOTAL PLANT LIST				
QTY	BOTANICAL NAME	COMMON NAME	SIZE	ROOT
Trees Deciduous				
5	<i>Tilia americana 'Duros'</i>	True North Linden	6cm Cal	B&B
Shrubs				
4	<i>Buddleia x 'Miss Molly'</i>	'Miss Molly' Butterfly Bush	#02	Potted
15	<i>Buxus 'Green Gem'</i>	Green Gem Boxwood	#02	Potted
4	<i>Buxus 'Green Velvet'</i>	Green Velvet Boxwood	#02	Potted
4	<i>Hydrangea arborescens 'Annabelle'</i>	Smooth Hydrangea	#02	Potted
4	<i>Hydrangea serrata 'Bluebird'</i>	Mountain Hydrangea 'Bluebird'	#02	Potted
3	<i>Rhus aromatica 'Gro Low'</i>	Fragrant Sumac	#02	Potted
8	<i>Syringa x Bloomerang 'Dwarf Pink'</i>	Dwarf Pink Lilac	#02	Potted
Ornamental Grasses				
5	<i>Deschampia cespitosa 'Bronzeschleier'</i>	Bronze Veil Tufted Hairgrass	#01	Potted
3	<i>Miscanthus sinensis 'Morning Light'</i>	Maiden Grass 'Maiden Light'	#01	Potted
6	<i>Pennisetum alopecuroides 'Karley Rose'</i>	Karley Rose Fountain Grass	#01	Potted
Ornamental Grasses				
6	<i>Nepeta x faassenii 'Walker's Low'</i>	Walker's Low Catmint	#01	Potted
9	<i>Rudbeckia fulgida 'Goldsturm'</i>	Black-eyed Susan	#01	Potted

NOTES:

- THIS DRAWING DEPICTS FORM AND CHARACTER AND IS TO BE USED FOR DEVELOPMENT PERMIT SUBMISSION ONLY. IT IS NOT INTENDED FOR USE AS A CONSTRUCTION DOCUMENT.
- THE LANDSCAPE DESIGN INDICATED HEREIN IS CONCEPTUAL; HOWEVER, IT REFLECTS THE MINIMUM ACCEPTABLE QUALITY AND SIZE.
- ALL PLANT MATERIALS AND CONSTRUCTION METHODS SHALL CONFORM TO THE MINIMUM STANDARDS SET OUT IN THE CANADIAN LANDSCAPE STANDARD (CURRENT EDITION).
- PLANT MATERIAL SELECTIONS INDICATED HEREIN ARE CONCEPTUAL ONLY. FINAL PLANTING SELECTIONS MAY VARY DEPENDING UPON AVAILABILITY.
- ALL PLANTING BEDS SHALL RECEIVE 50mm OF COMPOSTED BARK MUCH.
- ALL LANDSCAPE AREAS ARE TO BE IRRIGATED WITH AN EFFICIENT AUTOMATIC IRRIGATION SYSTEM.
- SOIL DEPTH TO BE AS FOLLOWS: SHRUB AREAS=300mm MIN, TREES=1000mm OR PLANTER DEPTH.



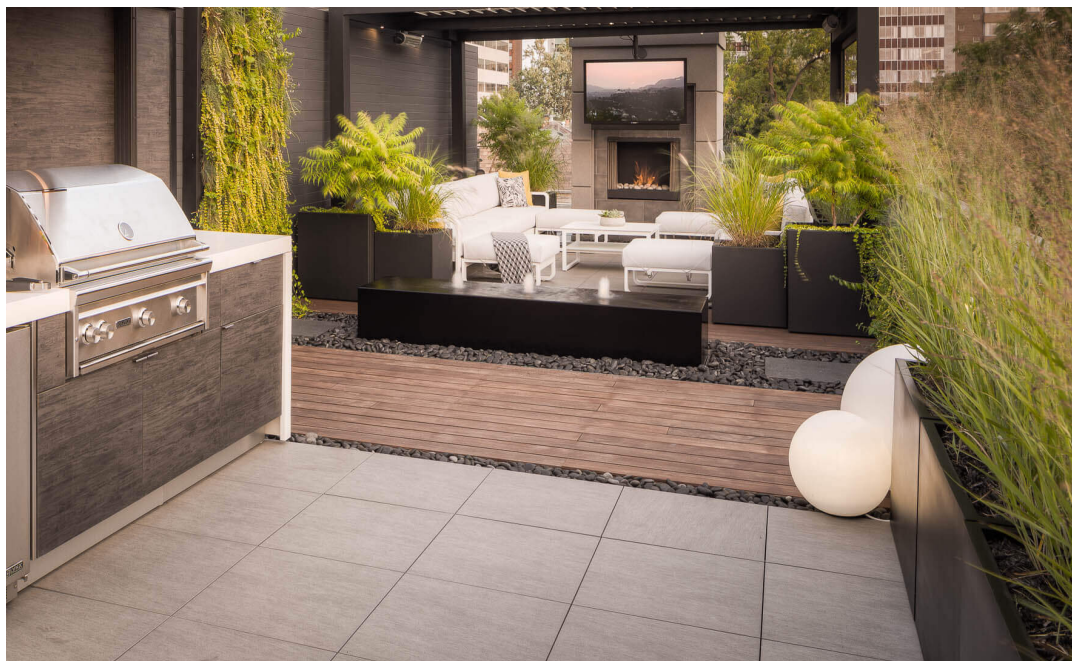
ISSUED FOR :		
2	ISSUED FOR DEVELOPMENT PERMIT PRIOR TO CONDITIONS RESPONSE #2 FINAL	2024-08-26
1	ISSUE FOR DP PRIOR TO CONDITIONS RESPONSE	2023-10-13
0	ISSUED FOR DEVELOPMENT PERMIT	2023-03-30
NO.	DESCRIPTION	DATE

LEGEND:

	PROPERTY LINE
	ROOF PAVERS
	WOOD PAVERS
	NON-SLIP PAVERS (REFER ARCHITECT)
	SHRUB PLANTING
	PERENNIAL PLANTING
	CONCRETE PLANTER BOX



POOL AREA



BBQ AREA



PLANTING

TOTAL PLANT LIST				
QTY	BOTANICAL NAME	COMMON NAME	SIZE	ROOT
Trees Deciduous				
5	<i>Tilia americana 'Duros'</i>	True North Linden	6cm Cal	B&B
Shrubs				
4	<i>Buddleia x 'Miss Molly'</i>	'Miss Molly' Butterfly Bush	#02	Potted
15	<i>Buxus 'Green Gem'</i>	Green Gem Boxwood	#02	Potted
4	<i>Buxus 'Green Velvet'</i>	Green Velvet Boxwood	#02	Potted
4	<i>Hydrangea arborescens 'Annabelle'</i>	Smooth Hydrangea	#02	Potted
4	<i>Hydrangea serrata 'Bluebird'</i>	Mountain Hydrangea 'Bluebird'	#02	Potted
3	<i>Rhus aromatica 'Gro Low'</i>	Fragrant Sumac	#02	Potted
8	<i>Syringa x Bloomerang Dwarf Pink</i>	Dwarf Pink Lilac	#02	Potted
Ornamental Grasses				
5	<i>Deschampia cespitosa 'Bronzeschleier'</i>	Bronze Veil Tufted Hairgrass	#01	Potted
3	<i>Miscanthus sinensis 'Morning Light'</i>	Maiden Grass 'Maiden Light'	#01	Potted
	<i>Pennisetum alopecuroides 'Karley Rose'</i>	Karley Rose Fountain Grass	#01	Potted
Ornamental Grasses				
6	<i>Nepeta x faassenii 'Walker's Low'</i>	Walker's Low Catmint	#01	Potted
9	<i>Rudbeckia fulgida 'Goldsturm'</i>	Black-eyed Susan	#01	Potted

NOTES:

- THIS DRAWING DEPICTS FORM AND CHARACTER AND IS TO BE USED FOR DEVELOPMENT PERMIT SUBMISSION ONLY. IT IS NOT INTENDED FOR USE AS A CONSTRUCTION DOCUMENT.
- THE LANDSCAPE DESIGN INDICATED HEREIN IS CONCEPTUAL; HOWEVER, IT REFLECTS THE MINIMUM ACCEPTABLE QUALITY AND SIZE.
- ALL PLANT MATERIALS AND CONSTRUCTION METHODS SHALL CONFORM TO THE MINIMUM STANDARDS SET OUT IN THE CANADIAN LANDSCAPE STANDARD (CURRENT EDITION).
- PLANT MATERIAL SELECTIONS INDICATED HEREIN ARE CONCEPTUAL ONLY. FINAL PLANTING SELECTIONS MAY VARY DEPENDING UPON AVAILABILITY.
- ALL PLANTING BEDS SHALL RECEIVE 50mm OF COMPOSTED BARK MUCH.
- ALL LANDSCAPE AREAS ARE TO BE IRRIGATED WITH AN EFFICIENT AUTOMATIC IRRIGATION SYSTEM.
- SOIL DEPTH TO BE AS FOLLOWS: SHRUB AREAS=300mm MIN, TREES=1000mm OR PLANTER DEPTH.

LEGEND:

LOW WATER REQUIREMENTS

MEDIUM WATER REQUIREMENTS

WATER ST.

LANE (ASPHALT)

PROPERTY LINE

PROPERTY LINE

ENTRANCE

ENTRANCE

ENTRANCE

ENTRANCE

ENTRANCE

ENTRANCE

ENTRANCE

ENTRANCE

ENTRANCE

BUILDING

PROPERTY LINE

LAWRENCE AVE

SEAL

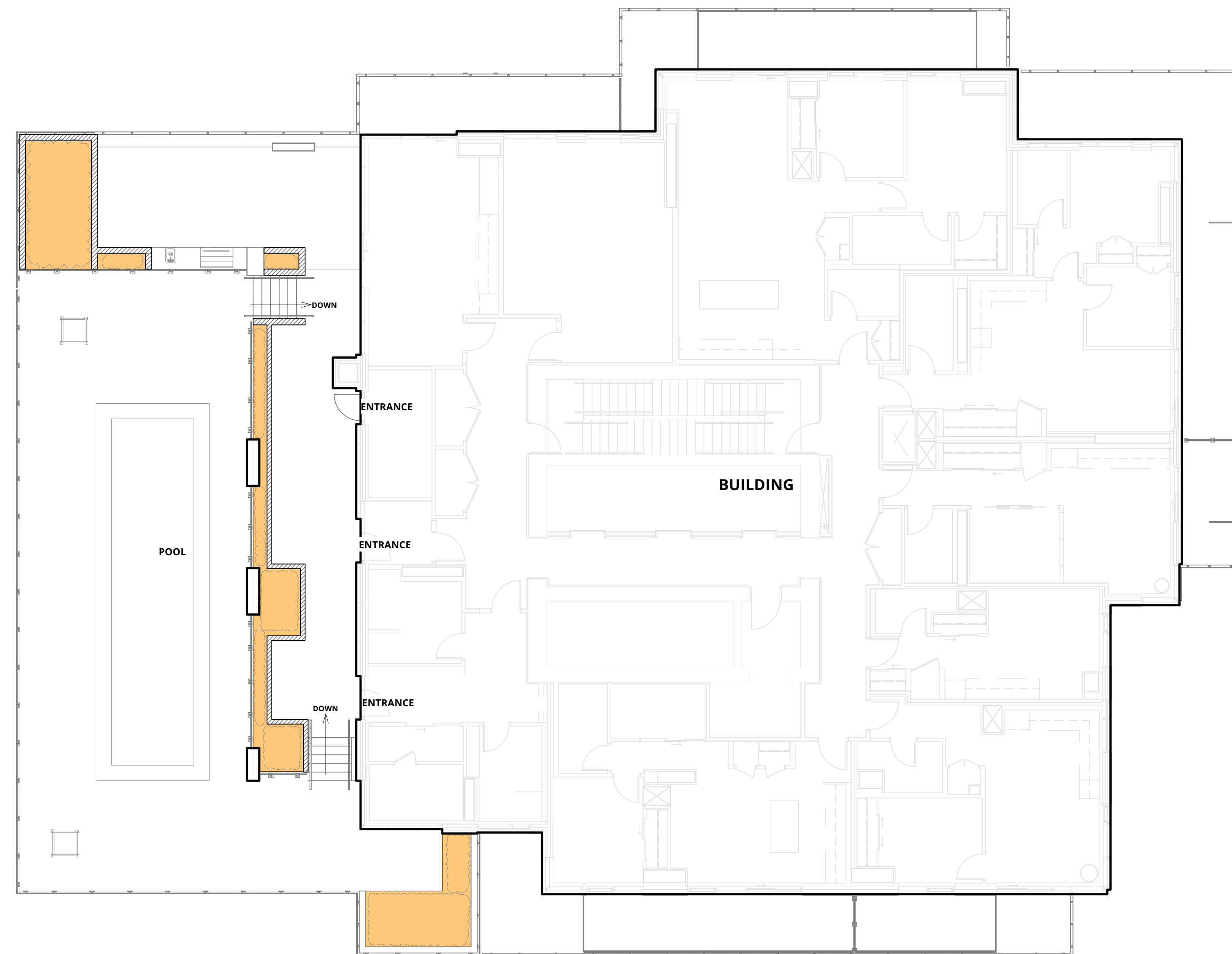
NORTH



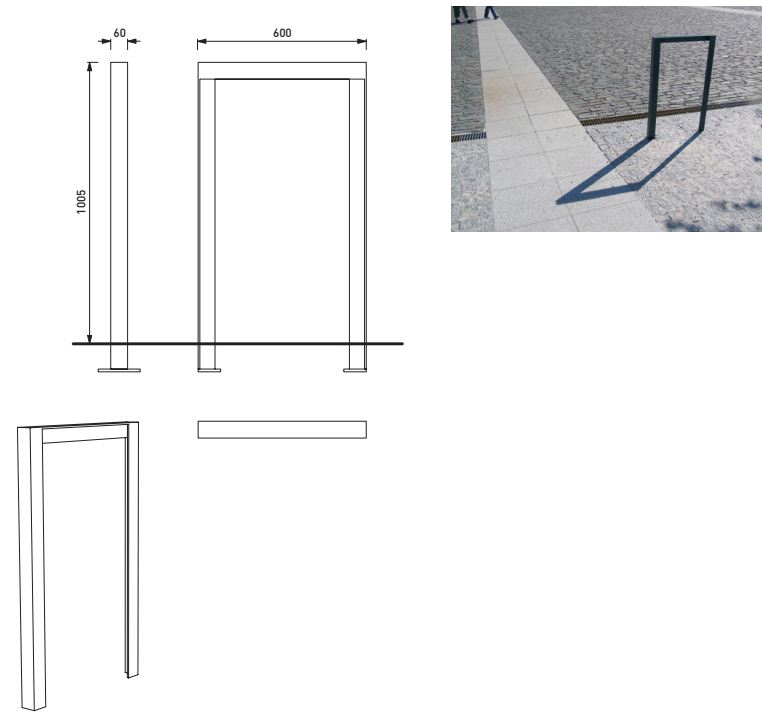
SCALE : 1 : 100

ISSUED FOR :		
2	ISSUED FOR DEVELOPMENT PERMIT PRIOR TO CONDITIONS RESPONSE #2 FINAL	2024-08-26
1	ISSUE FOR DP PRIOR TO CONDITIONS RESPONSE	2023-10-13
0	ISSUED FOR DEVELOPMENT PERMIT	2023-03-30
NO.	DESCRIPTION	DATE

 MEDIUM WATER REQUIREMENTS

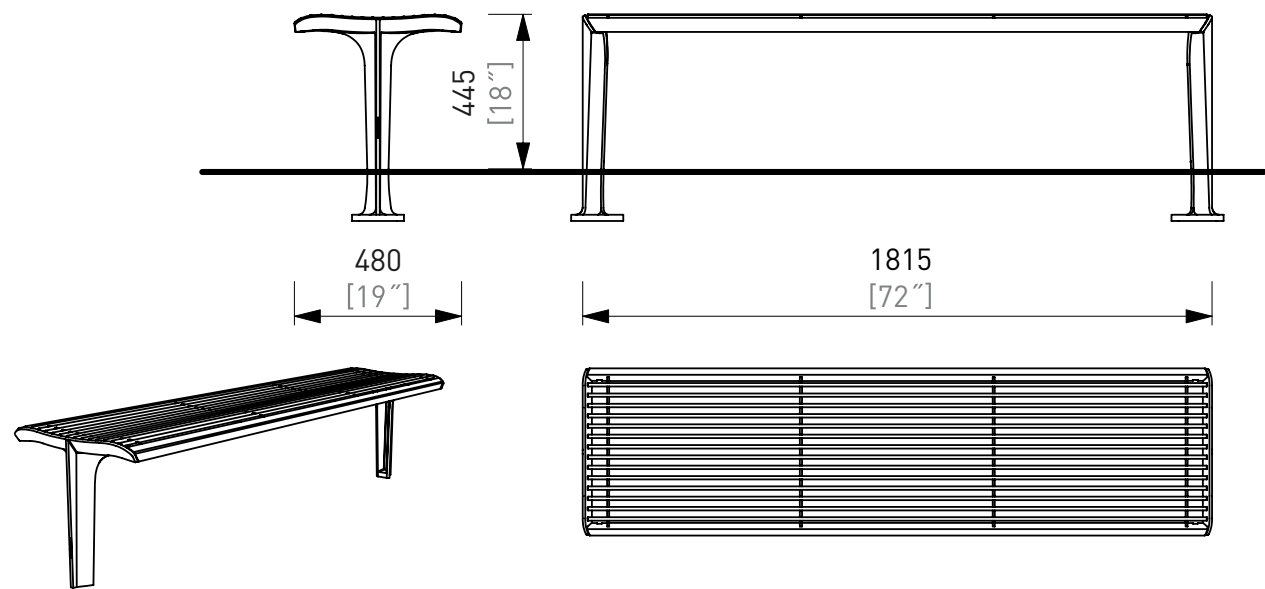


NOTES:
1. BIKE RACK TO BE #SL505 - LOTLIMIT BIKE RACK. MATERIAL: STEEL COLOUR: BLACK.
INSTALL PER MANUFACTURER'S RECOMMENDATIONS, ANCHORED BELOW GROUND.
AVAILABLE FROM MMCITE 1 800 890 6257 OR PRE APPROVED EQUAL.



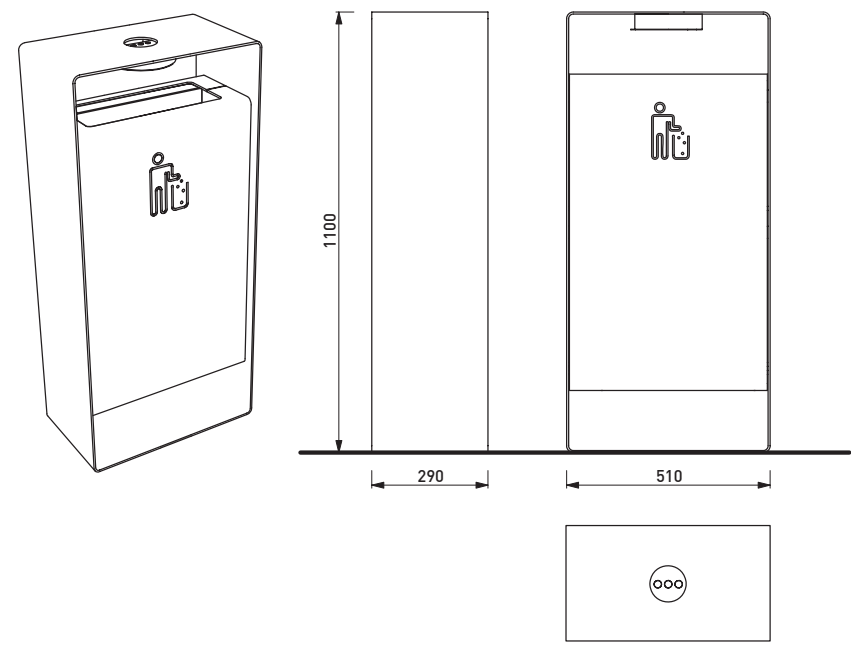
1 BIKE RACK
LDP2.1 NTS

NOTES:
1. BENCH TO BE #EMS-211 EMAU SOLO BENCH. MATERIAL: CAST ALUMINUM STRUCTURE, TROPICAL HARDWOOD. INSTALL PER MANUFACTURER'S RECOMMENDATIONS,
ANCHORED UNDER GROUND. AVAILABLE FROM MMCITE 1 800 890 6257 OR PRE APPROVED EQUAL.



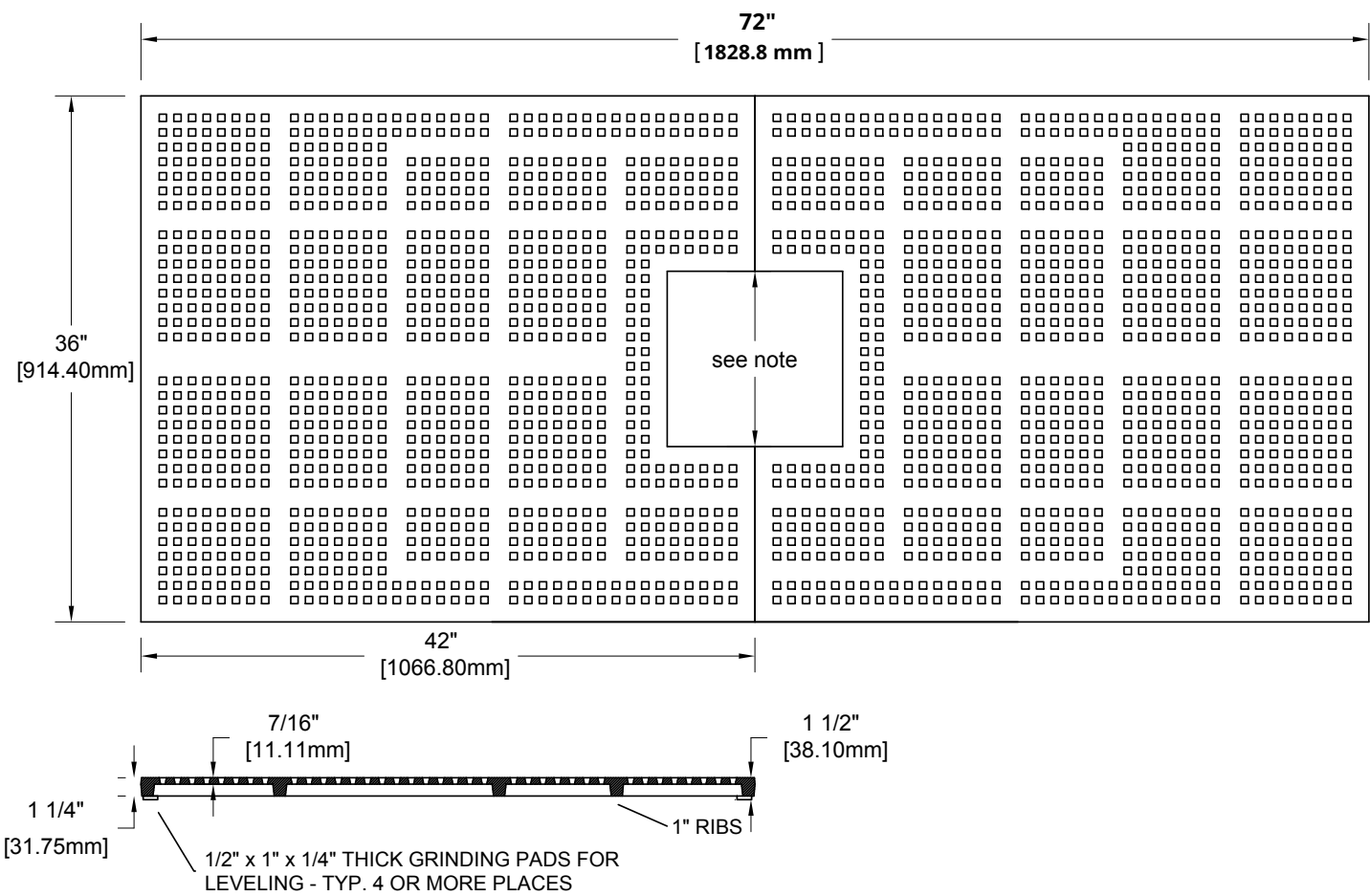
2 BENCH
LDP2.1 NTS

NOTES:
1. GARBAGE BIN TO BE #KR120 - RADIUM GARBAGE BIN. MATERIAL: STAINLESS STEEL COLOUR: STANDARD. INSTALL PER MANUFACTURER'S RECOMMENDATIONS,
SURFACE MOUNTED. AVAILABLE FROM MMCITE 1 800 890 6257 OR PRE APPROVED EQUAL.



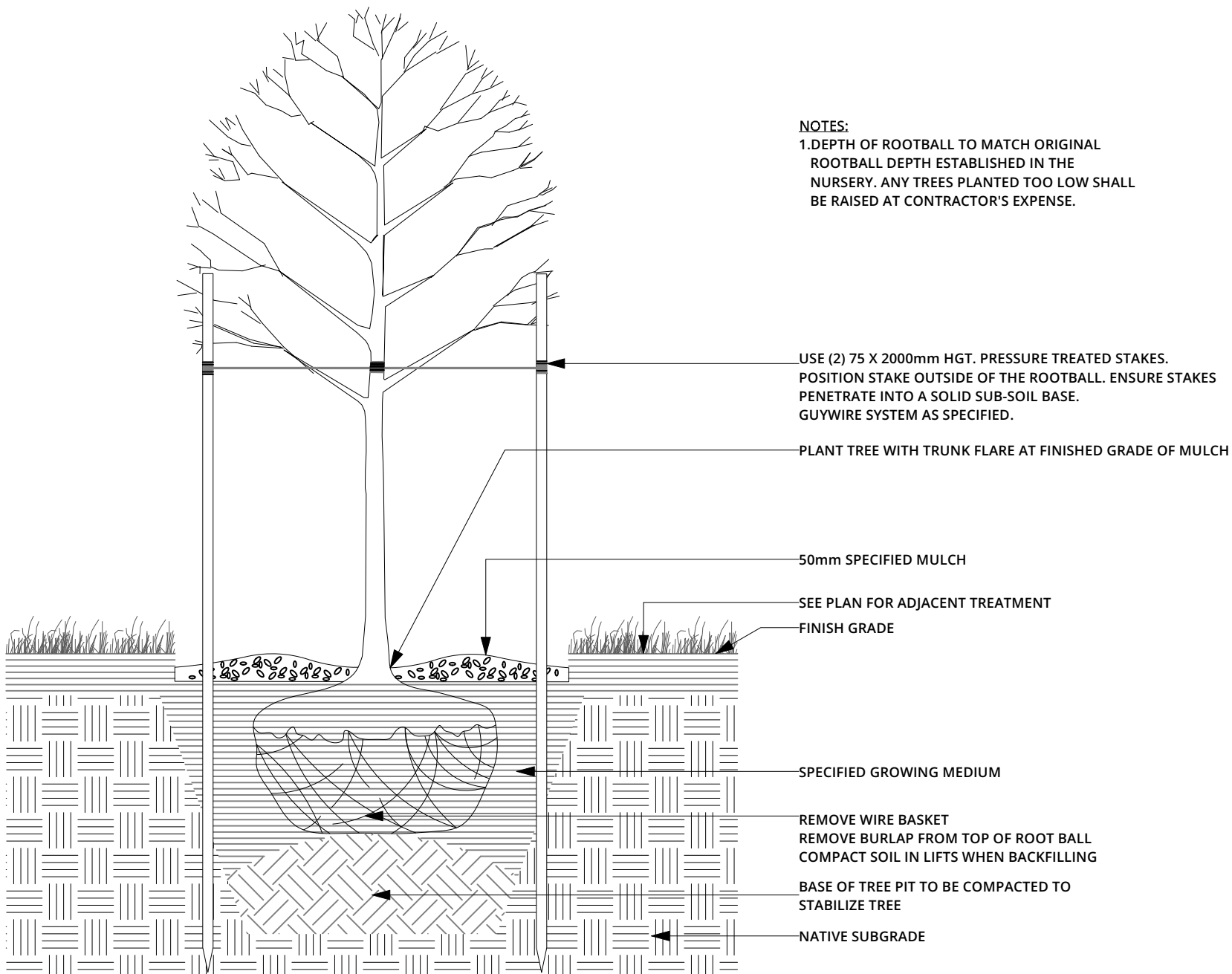
3 GARBAGE BIN
LDP2.1 NTS

NOTES:
1. TREE GRATE TO BE #7268 MARKET STREET CAST IRON 36" x 72". AVAILABLE FROM IRONSMITH, INC 800-3388-4766 OR PRE APPROVED EQUAL.



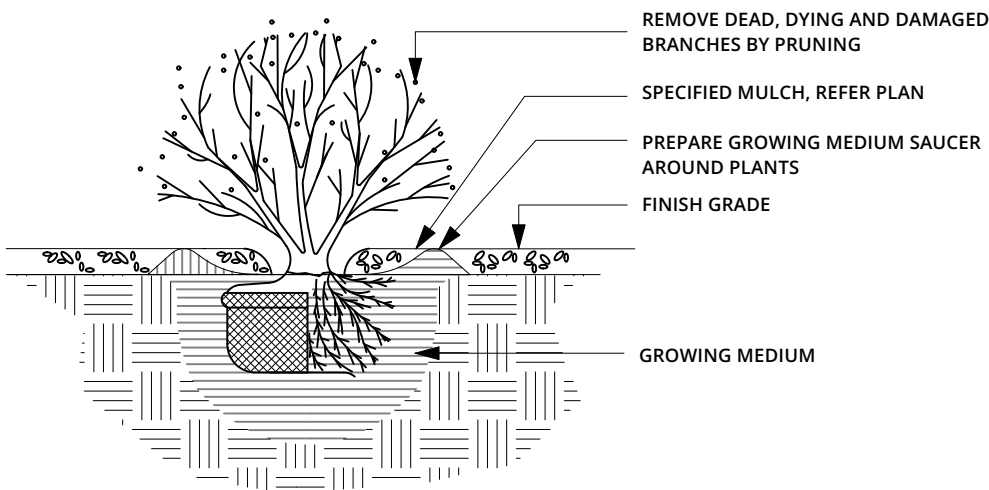
4 TREE GRATE
LDP2.1 NTS

NOTES:
1. DEPTH OF ROOTBALL TO MATCH ORIGINAL
ROOTBALL DEPTH ESTABLISHED IN THE
NURSERY. ANY TREES PLANTED TOO LOW SHALL
BE RAISED AT CONTRACTOR'S EXPENSE.



5 TREE PLANTING
LDP2.1 NTS

NOTES:
1. REMOVE CONTAINER WITHOUT DISTURBING THE ROOT SYSTEM OF THE PLANT.
2. CONTRACTOR TO ALLOW FOR SETTLEMENT WHEN PLANTING.



6 SHRUB PLANTING
LDP2.1 NTS